

1. Table of Contents (This Page)

Created on Mon Apr 21 14:08:40 2014

2. top

3. bottom GND

4. outline

5. plated-drill

6. componentmask

7. soldermask

8. topsilk

9. bottomsilk

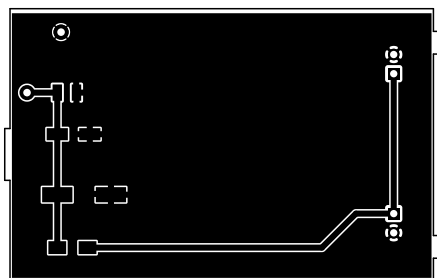
10. toppaste

11. bottompaste

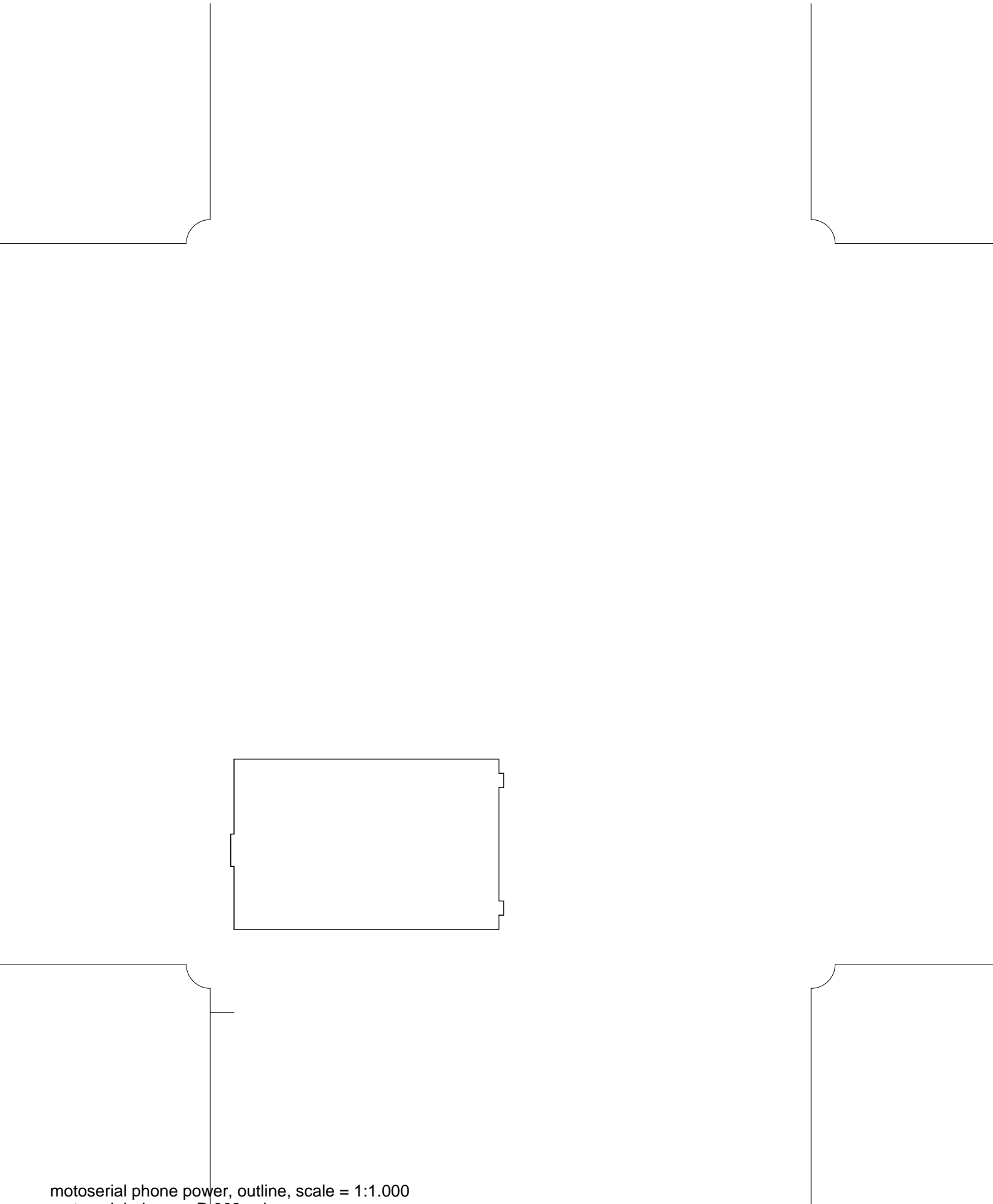
12. topassembly

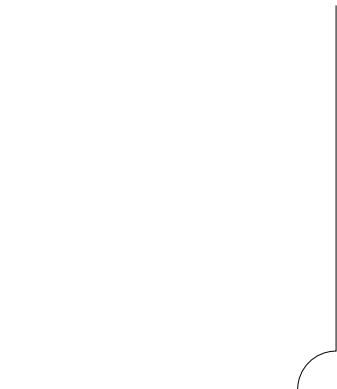
13. bottomassembly

14. fab









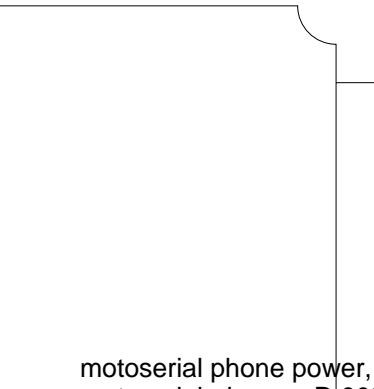
.

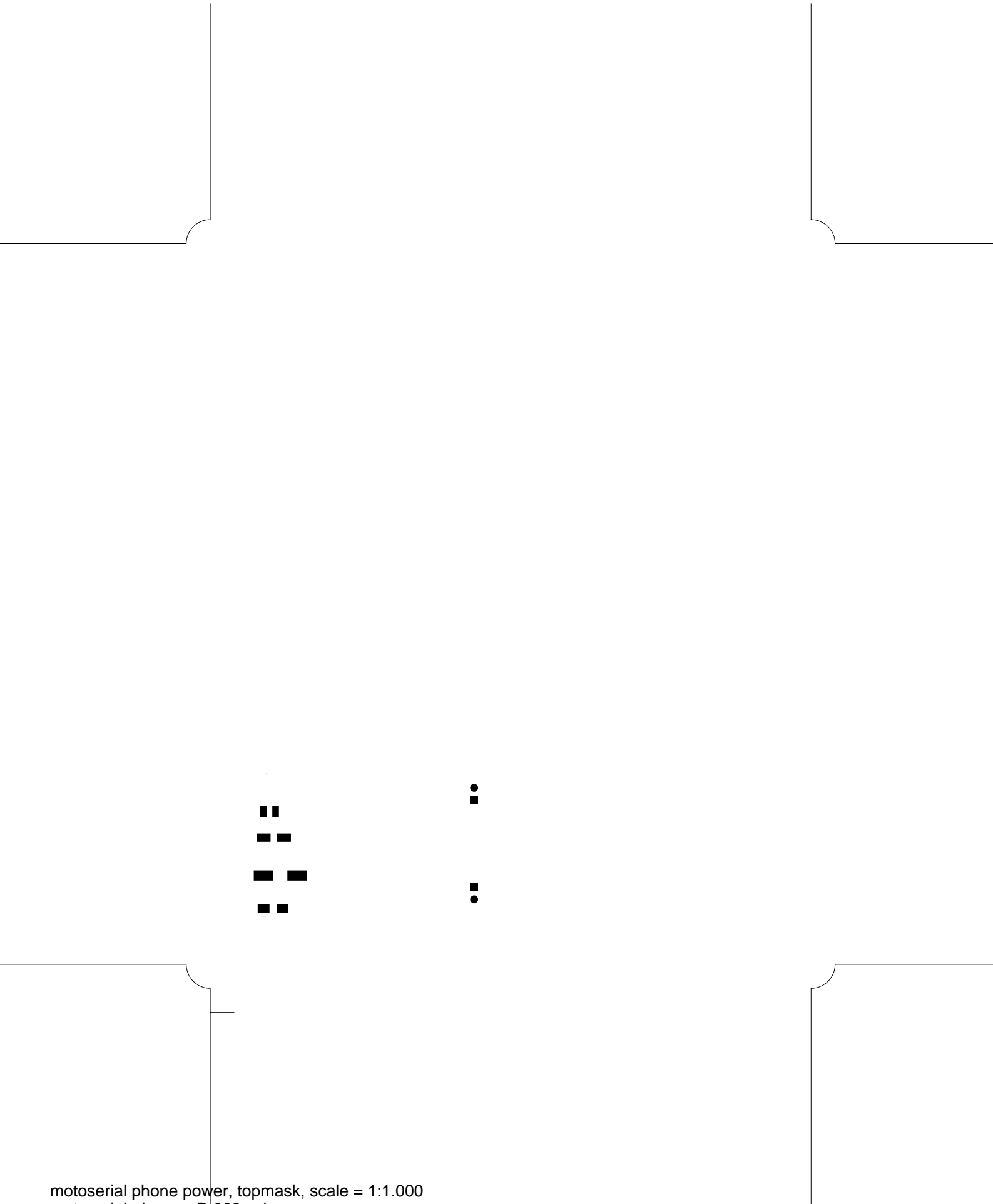
•

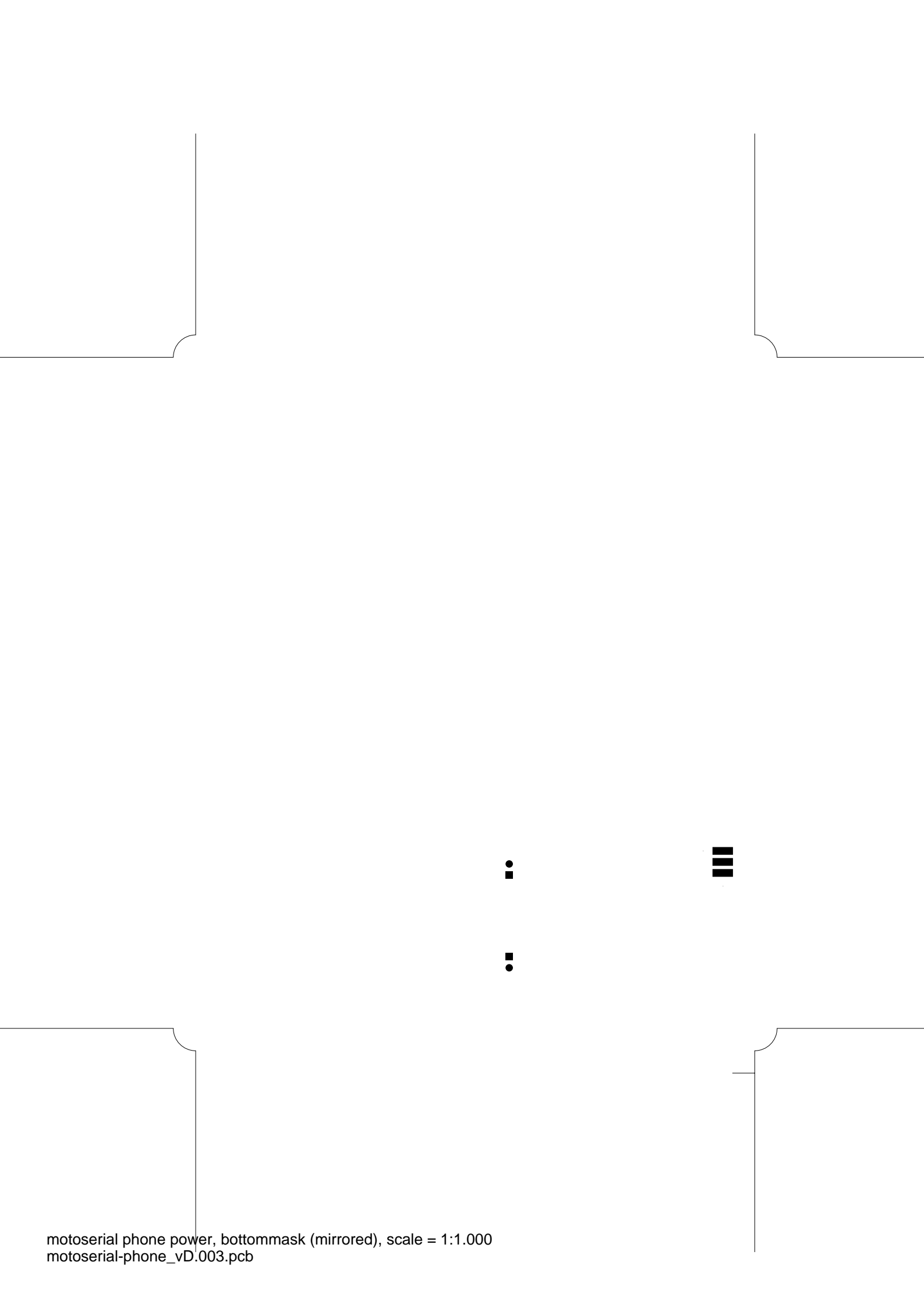
•

•

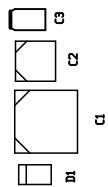
•

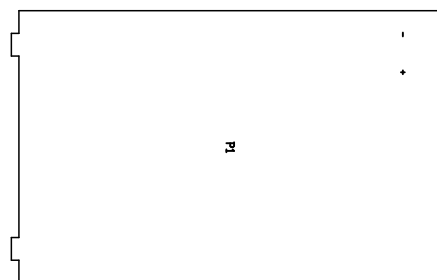


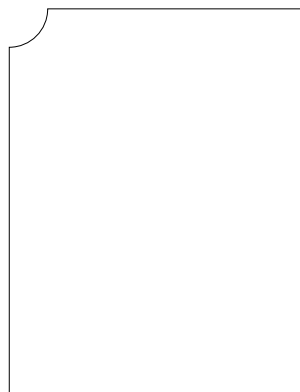
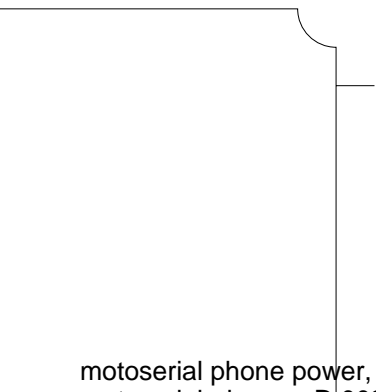
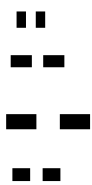


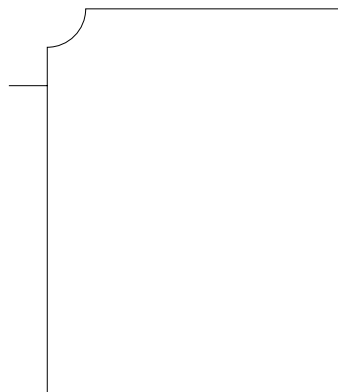
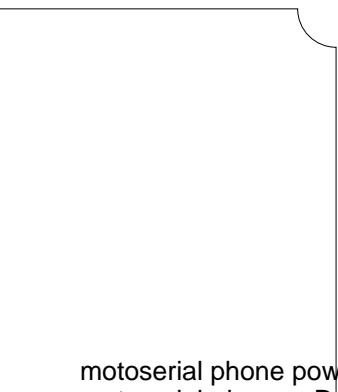
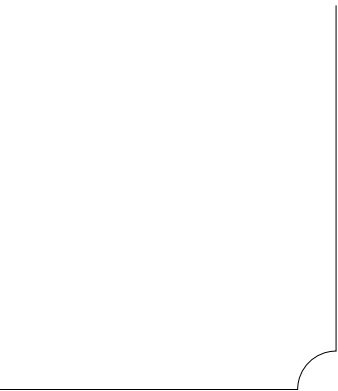


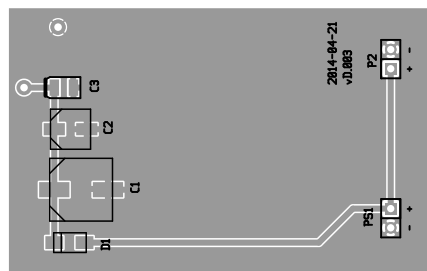
2014-04-21
v1.003

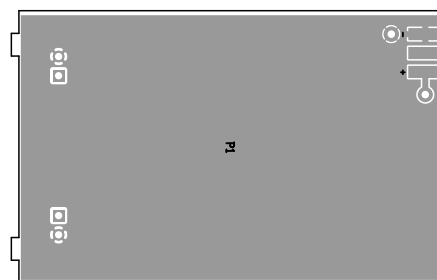










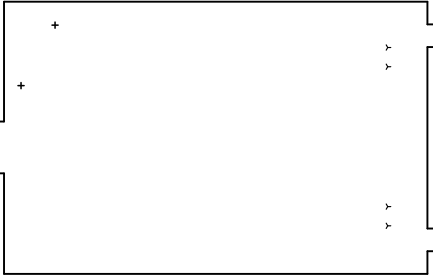


There are 2 different drill sizes used in this layout, 6 holes total

Symbol	Diam. (Inch)	Count	Plated?
--------	--------------	-------	---------

γ	0.038	4	YES
+	0.040	2	YES

Title: motoserial phone power - Fabrication Drawing
Author: Kevin Redon
Date: Mo 21 Apr 2014 21:08:40 GMT UTC



Board outline is the center-line of this path