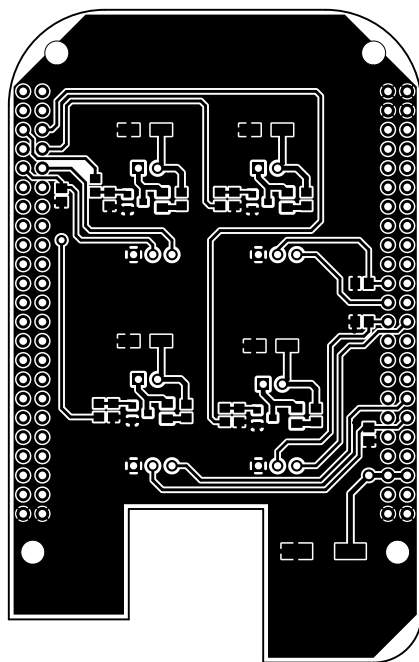
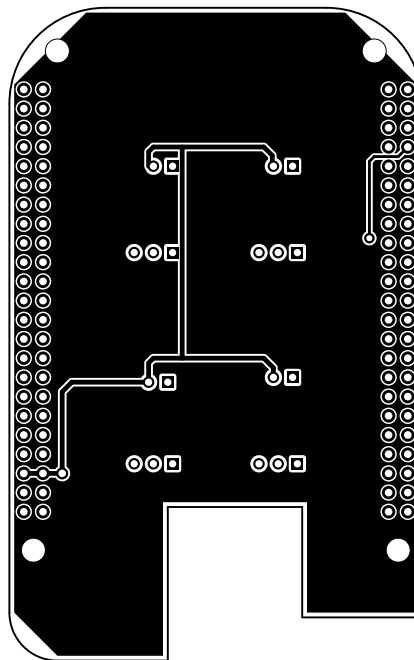


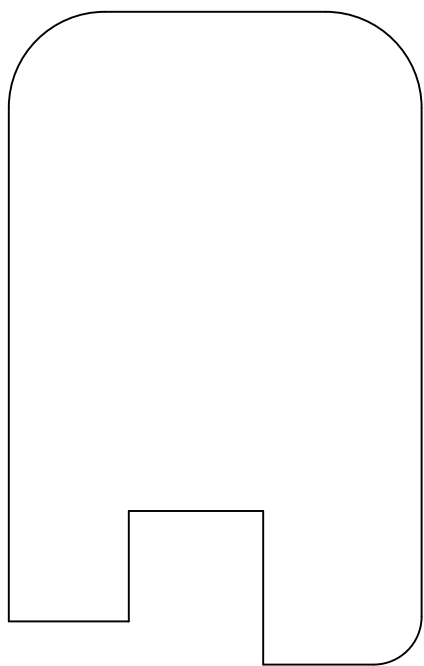
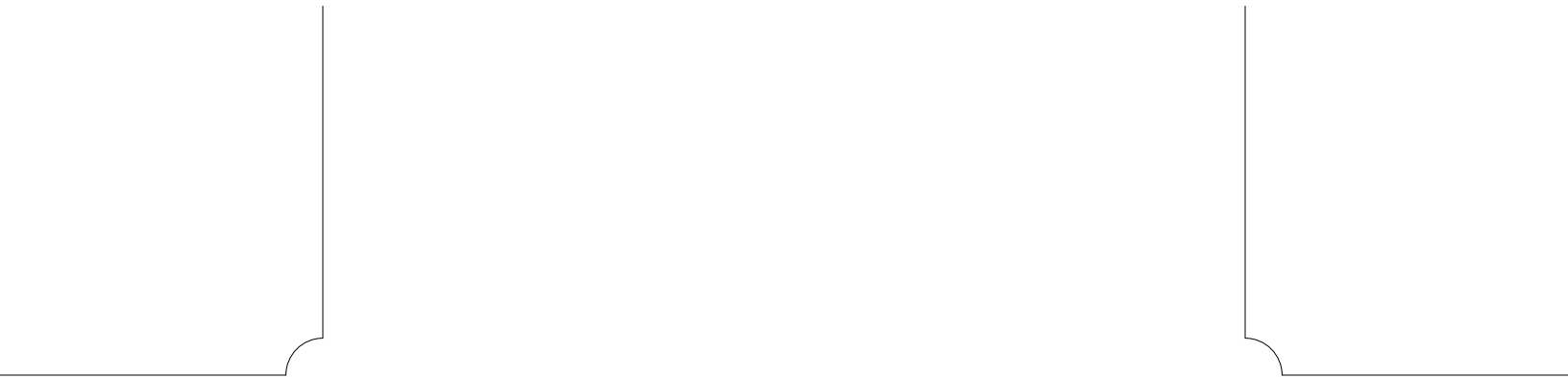
1. Table of Contents (This Page)

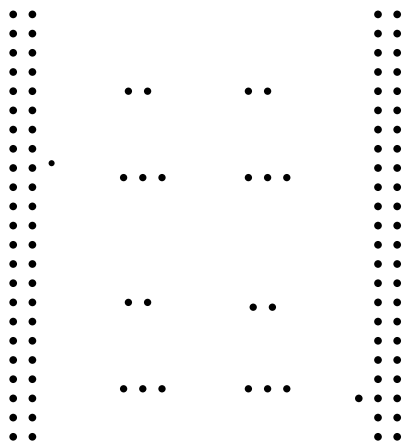
Created on Mon Apr 7 21:50:39 2014

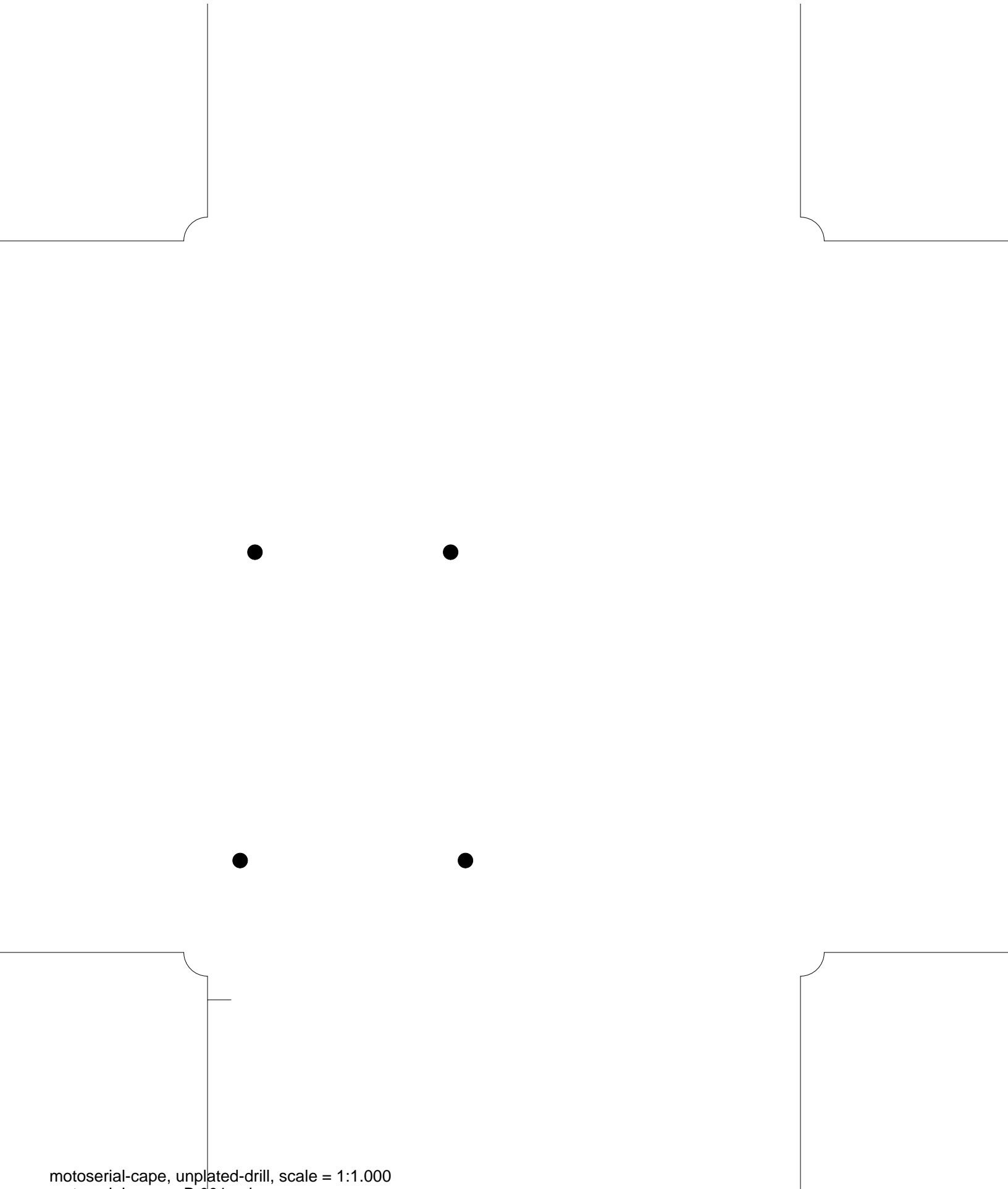
- 2. top
- 3. bottom
- 4. outline
- 5. plated-drill
- 6. unplated-drill
- 7. componentmask
- 8. soldermask
- 9. topsilk
- 10. bottomsilk
- 11. toppaste
- 12. topassembly
- 13. bottomassembly
- 14. fab



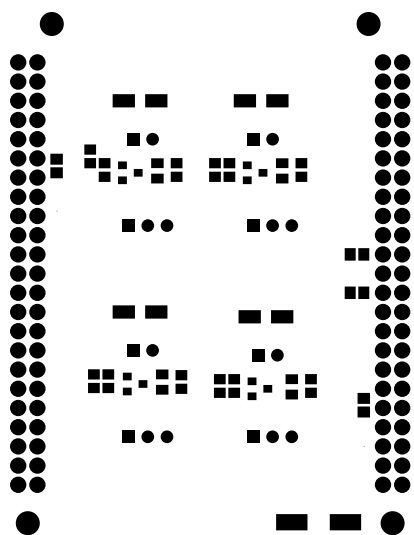


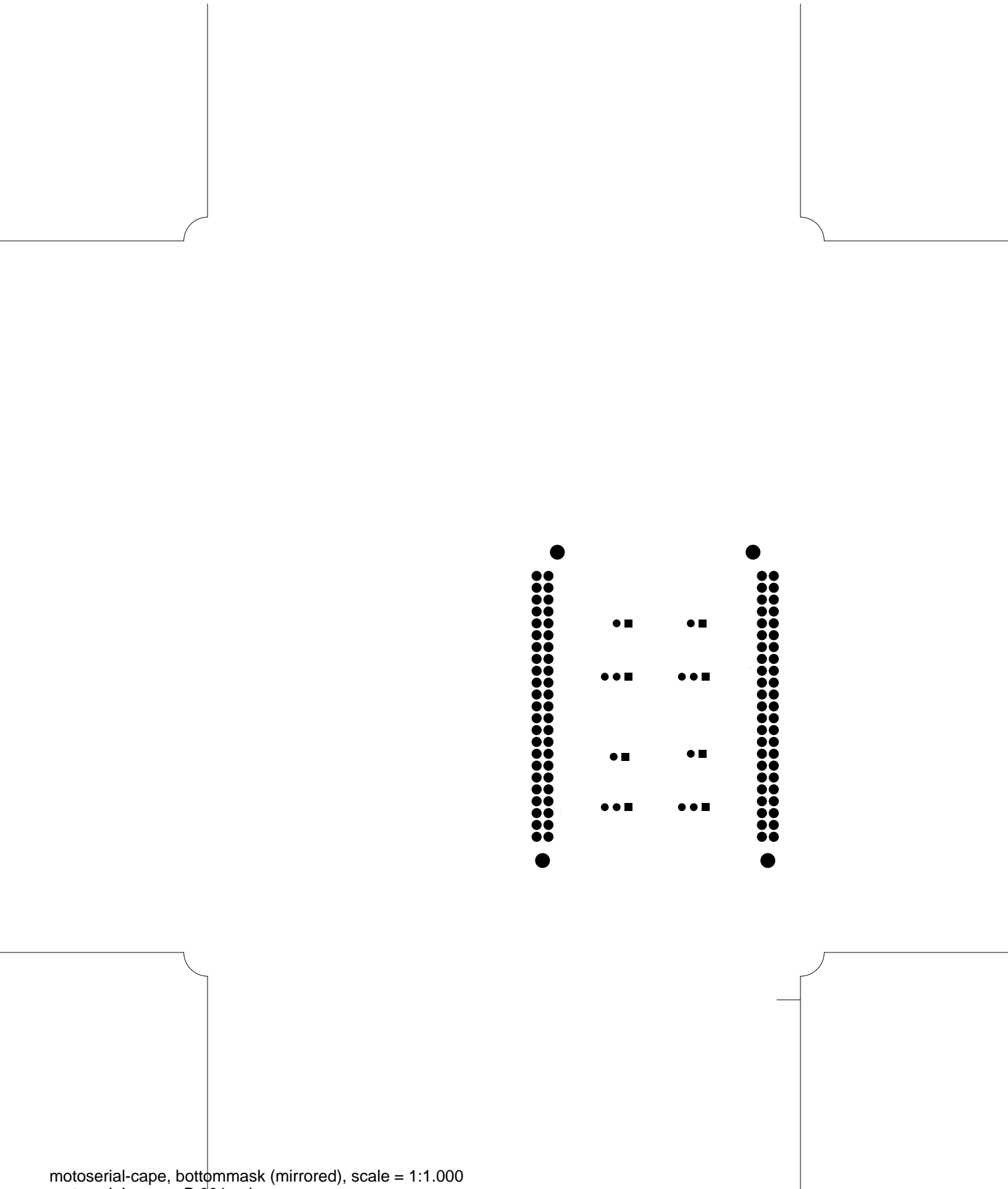


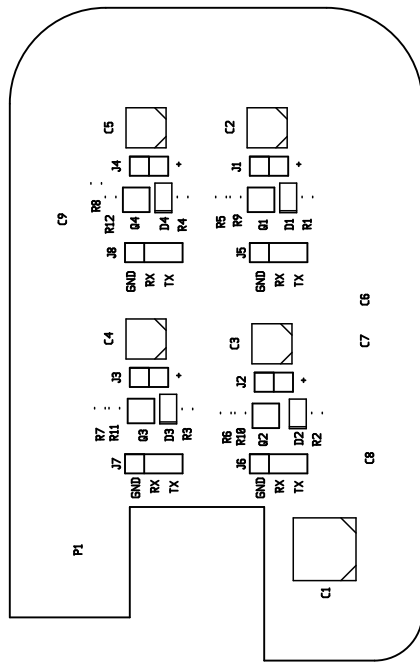


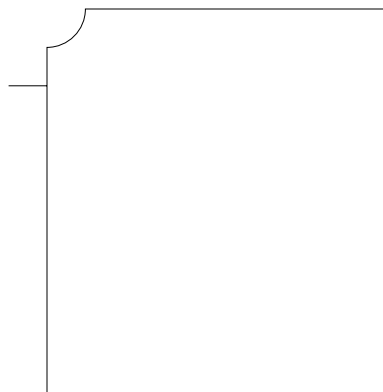
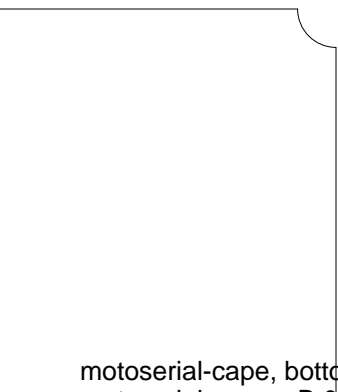
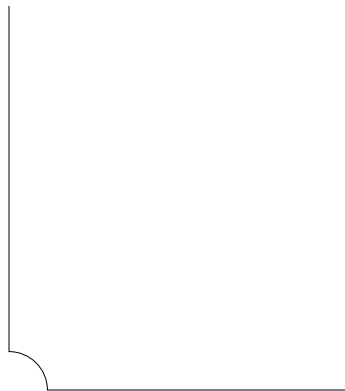
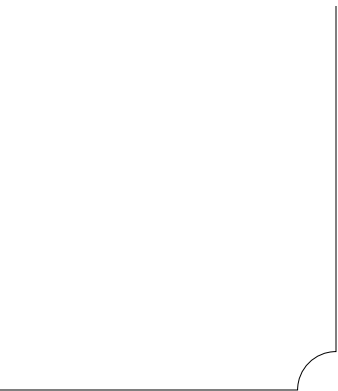


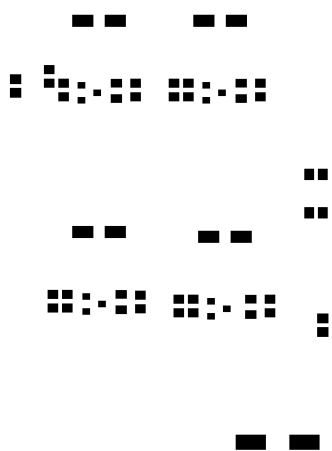
motoserial-cape, unplated-drill, scale = 1:1.000
motoserial-cape_vB.001.pcb

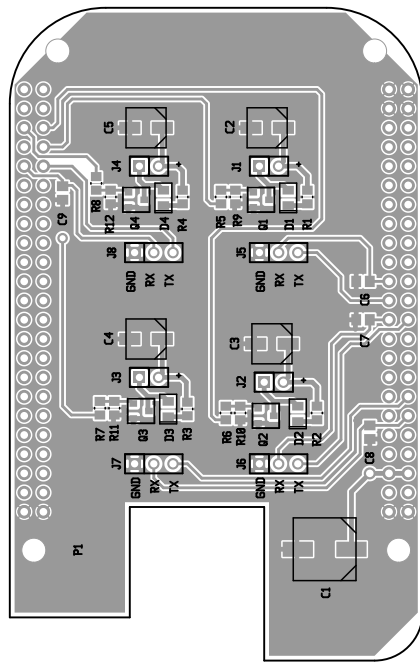


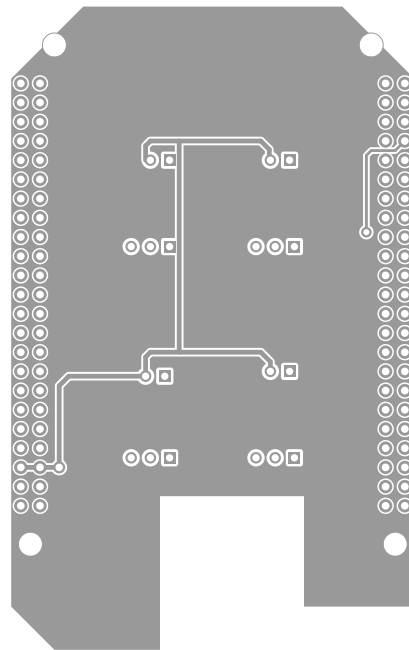








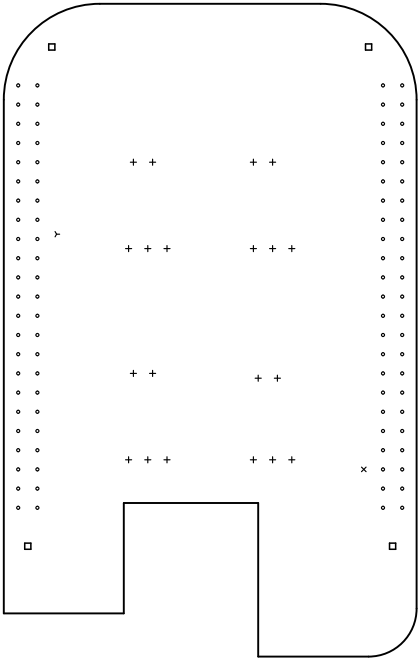




There are 5 different drill sizes used in this layout, 118 holes total

Symbol	Diam. (Inch)	Count	Plated?
y	0.031	1	YES
+	0.038	20	YES
x	0.039	1	YES
o	0.040	92	YES
□	0.125	4	NO

Title: motoserial-cape - Fabrication Drawing
Author: K ■ ■ ■ vin Radon
Date: Mo 07 Apr 2014 19:50:39 GMT UTC



Board outline is the centerline of this path