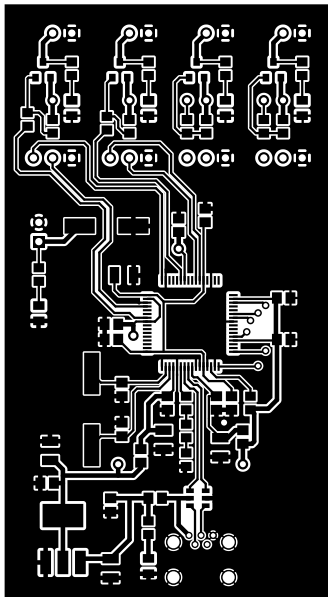
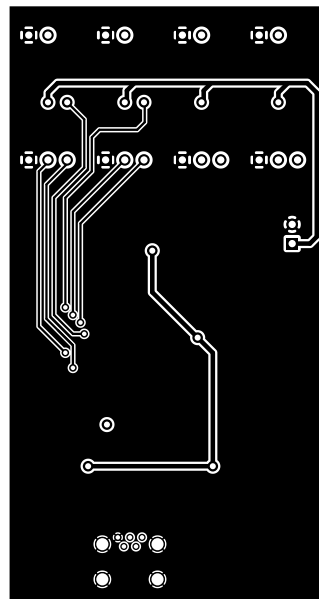
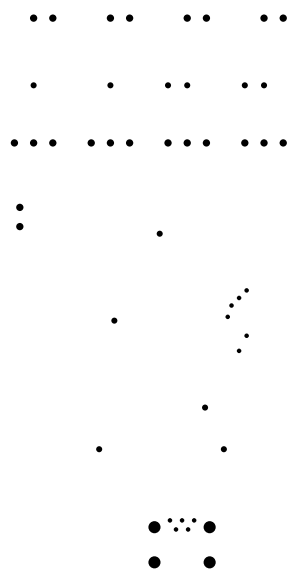


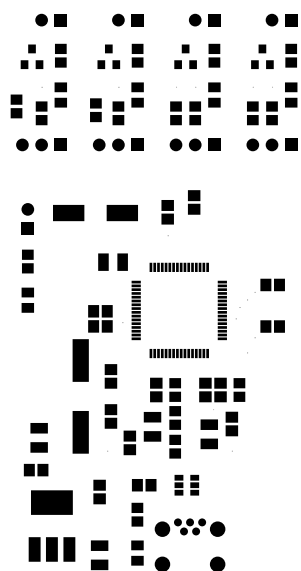
1. Table of Contents (This Page)  
Created on Wed Apr 2 18:22:09 2014

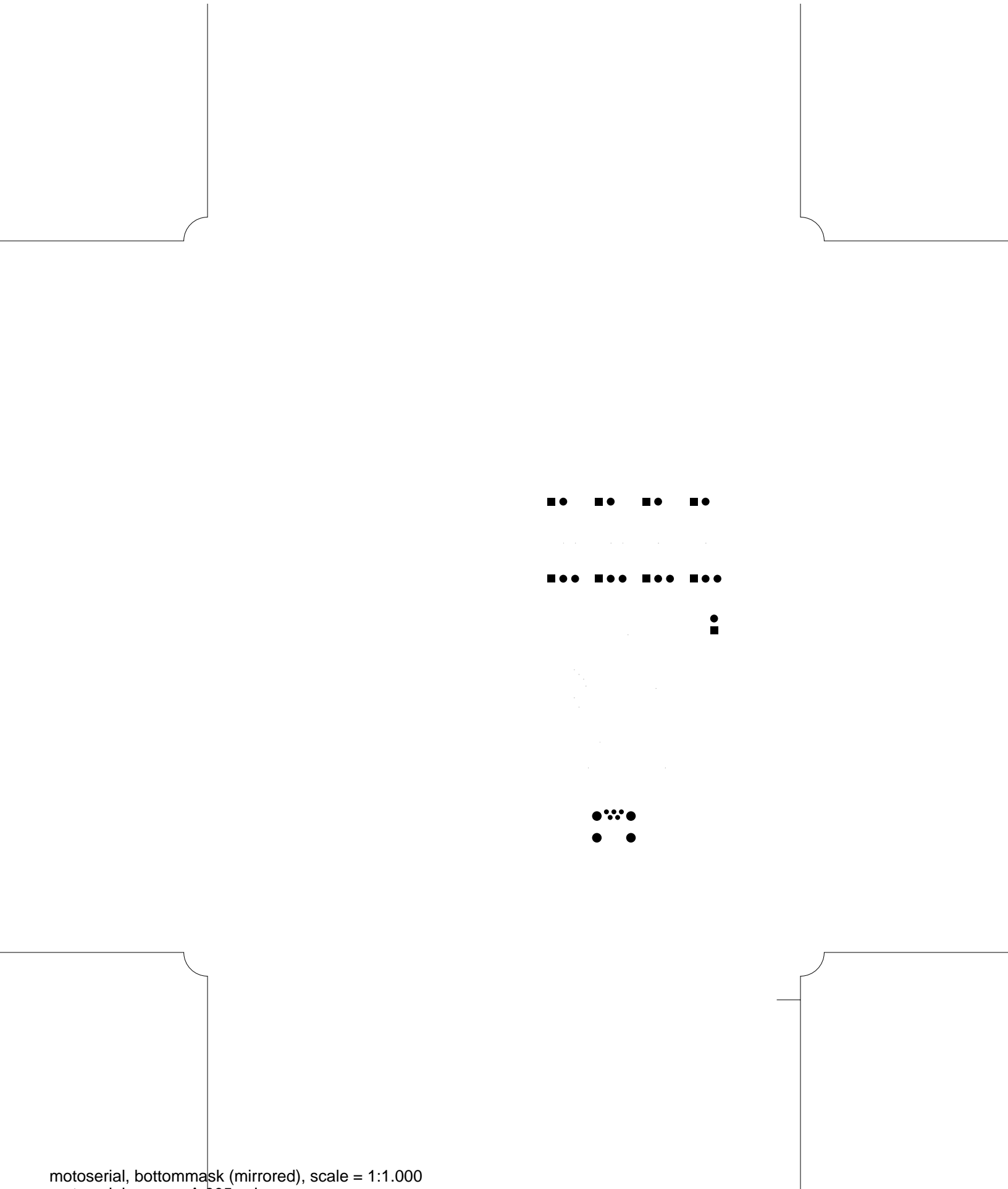
2. top
3. bottom power
4. plated-drill
5. componentmask
6. soldermask
7. topsilk
8. bottomsilk
9. toppaste
10. topassembly
11. bottomassembly
12. fab

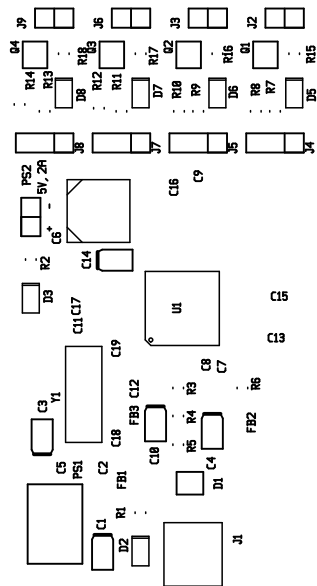


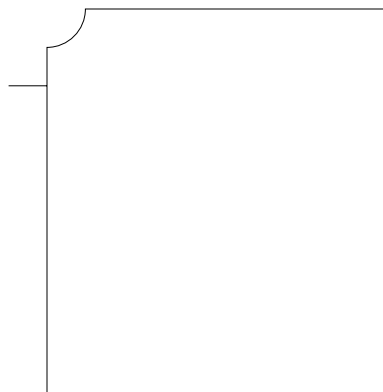
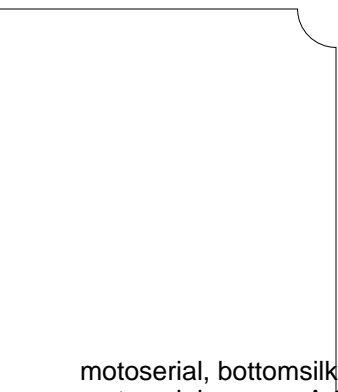
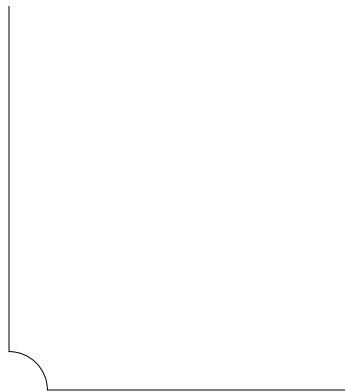
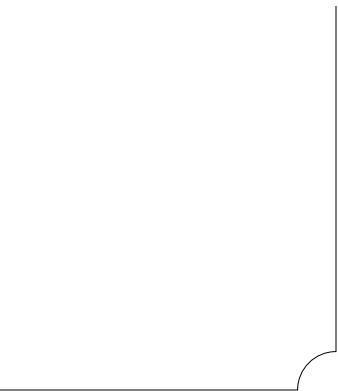




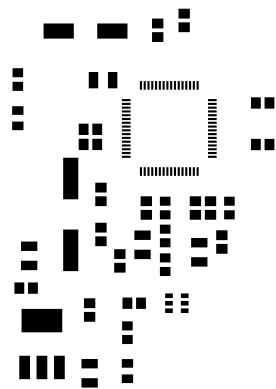
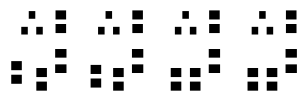


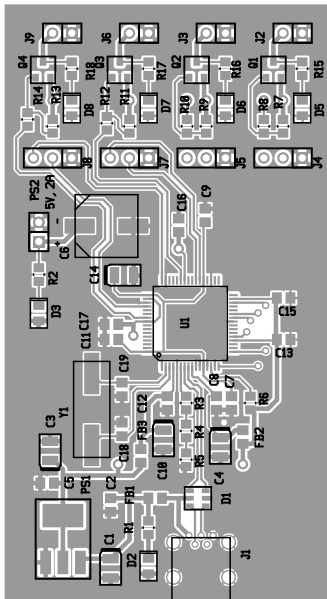


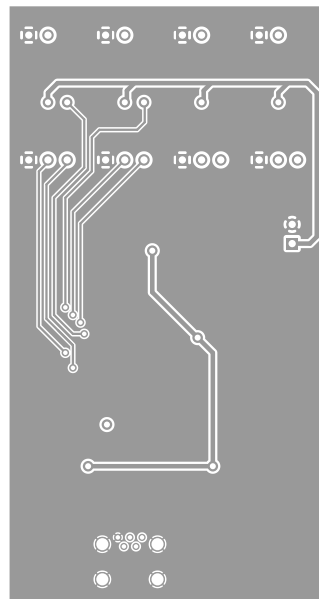








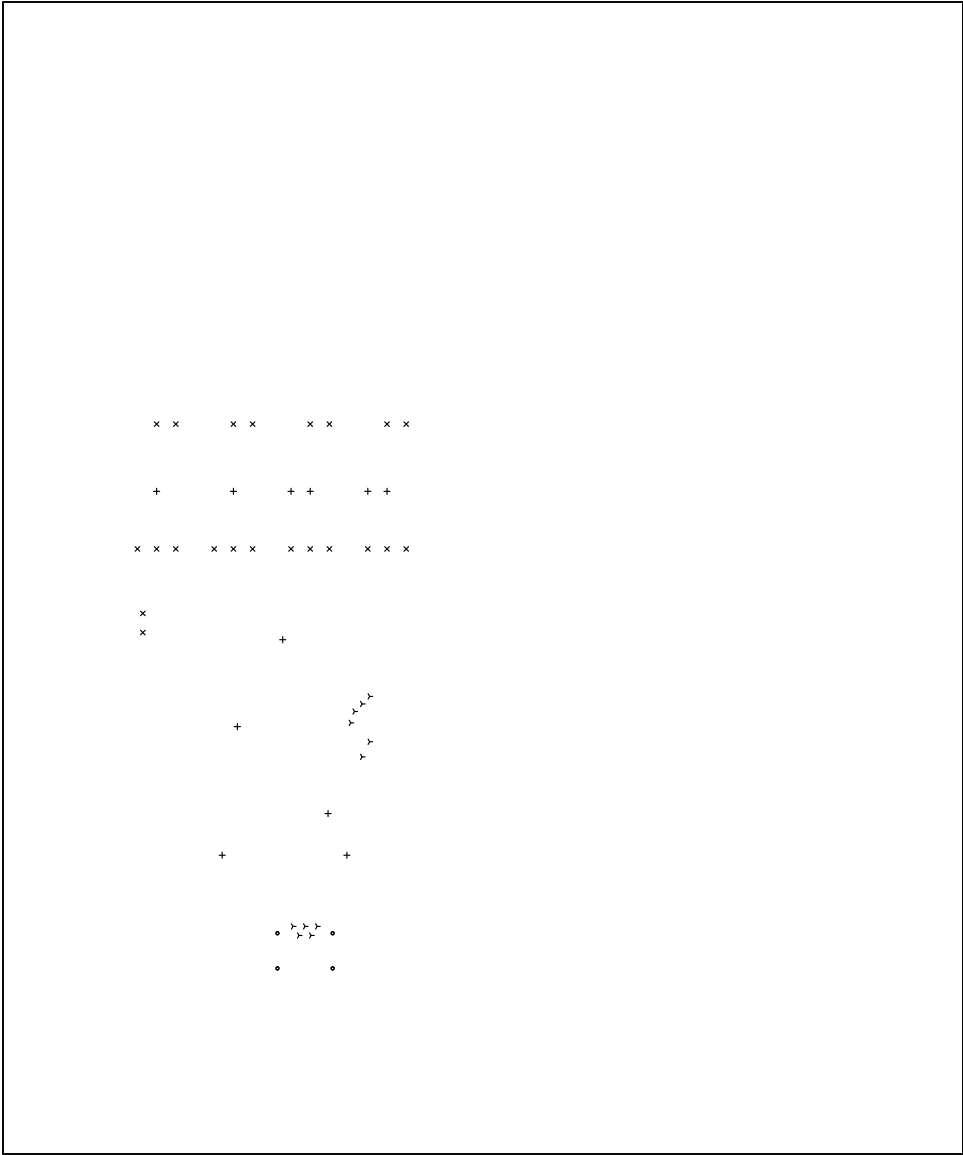




motoserial, bottomassembly (mirrored), scale = 1:1.000  
motoserial-spare\_vA.005.pcb

There are 4 different drill sizes used in this layout, 48 holes total

Symbol	Diam. (Inch)	Count	Plated?	Title: motoserial - Fabrication Drawing
γ	0.024	11	YES	Author: K████vin Radon
+	0.032	11	YES	Date: M: 02 Apr 2014 16:22:09 GMT UTC
x	0.038	22	YES	Maximum Dimensions: 6000.000000 mils wide, 5000.000000 mils high
•	0.063	4	YES	



Board outline is the centerline of this 8.000000 mil rectangle - 0.0 to 6000.000000, 5000.000000 mils