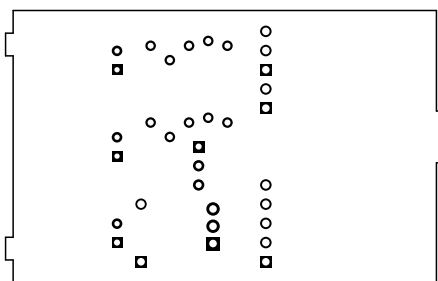
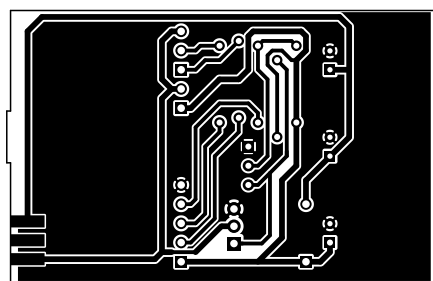
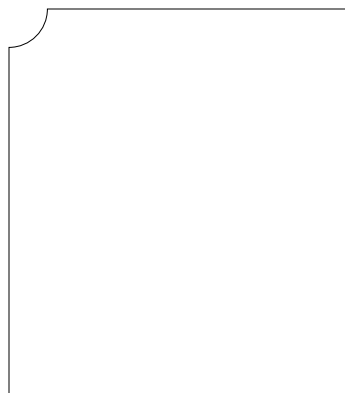
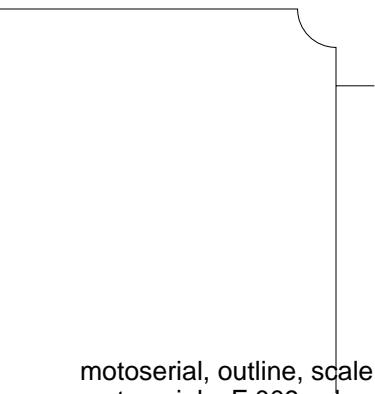
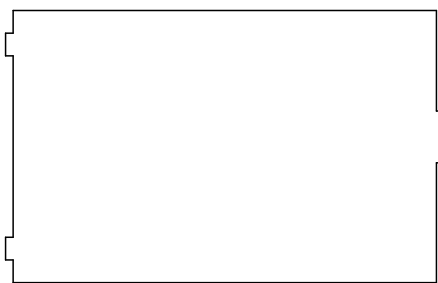
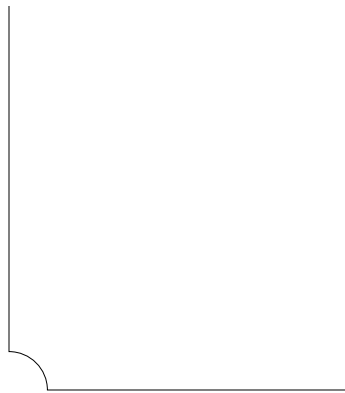
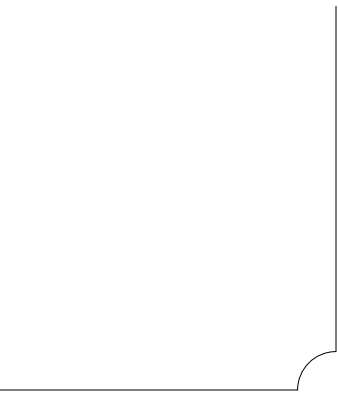


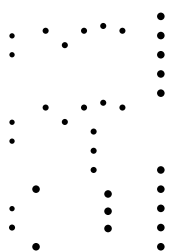
1. Table of Contents (This Page)  
Created on Thu May 8 12:15:14 2014

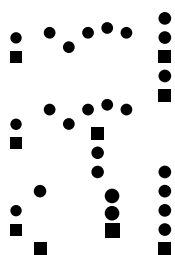
2. top components
3. bottom signal
4. outline
5. plated-drill
6. componentmask
7. soldermask
8. topsilk
9. bottomsilk
10. bottompaste
11. topassembly
12. bottomassembly
13. fab

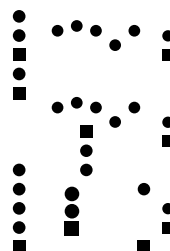






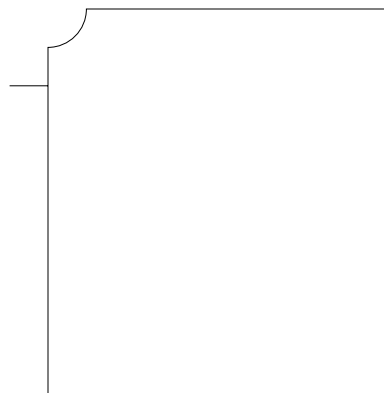
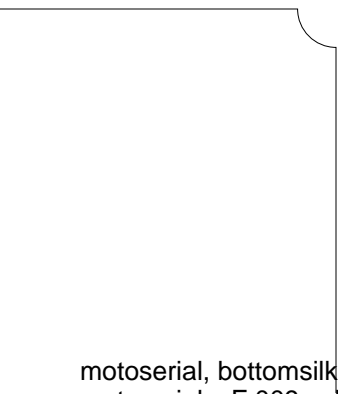
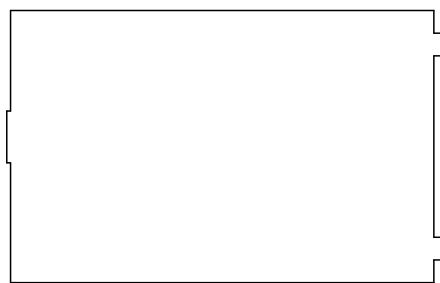
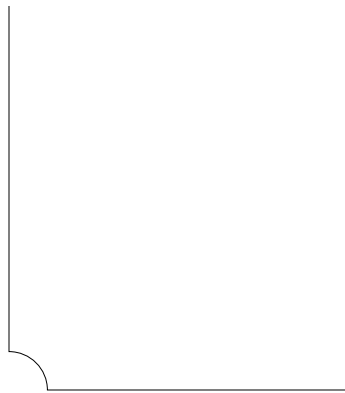
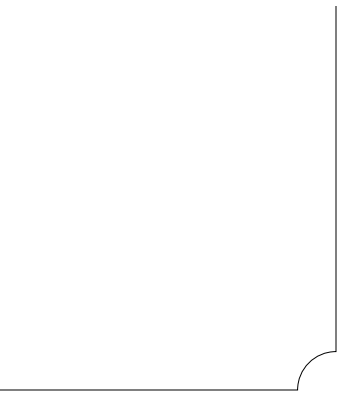


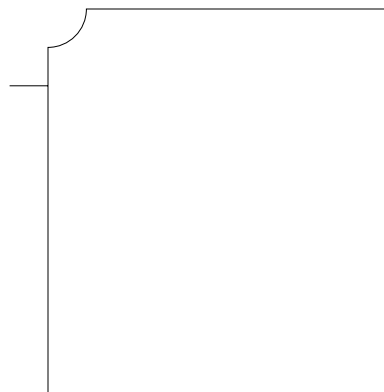
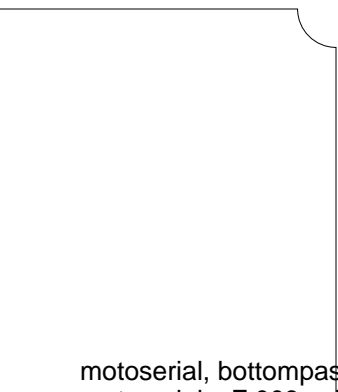
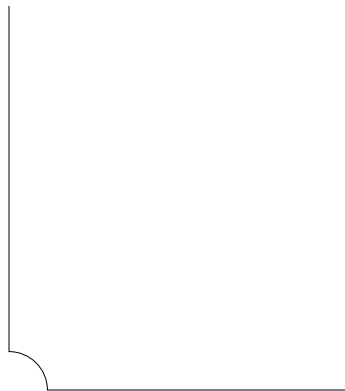
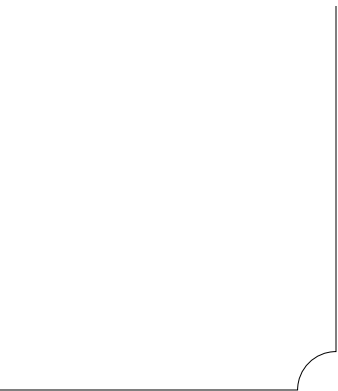




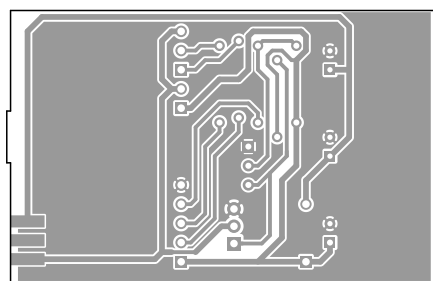








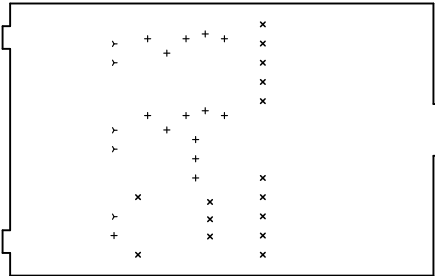




There are 3 different drill sizes used in this layout, 34 holes total

Symbol	Diam. (Inch)	Count	Plated?
y	0.028	5	YES
+	0.031	14	YES
x	0.040	15	YES

Title: motoserial - Fabrication Drawing  
 Author: K████vin Radon  
 Date: Do 08 Mai 2014 10:15:14 GMT UTC



Board outline is the centerline of this path