

# 1. Table of Contents (This Page)

Created on Mon Apr 21 14:08:41 2014

2. top signal

3. bottom

4. outline

5. plated-drill

6. unplated-drill

7. componentmask

8. soldermask

9. topsilk

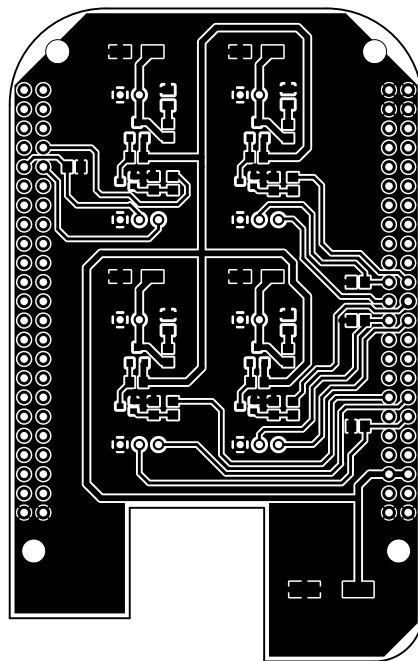
10. bottomsilk

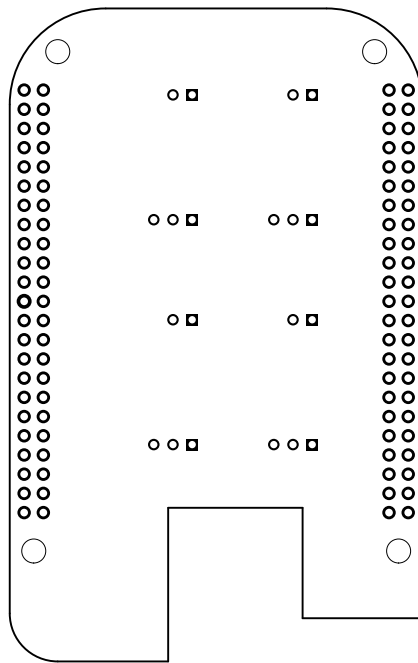
11. toppaste

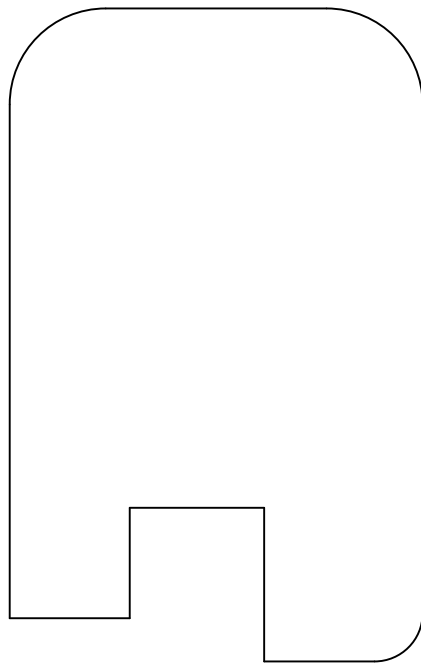
12. topassembly

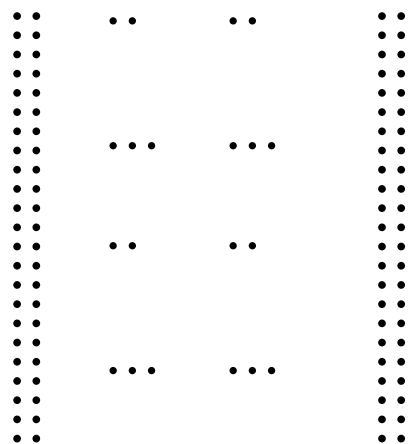
13. bottomassembly

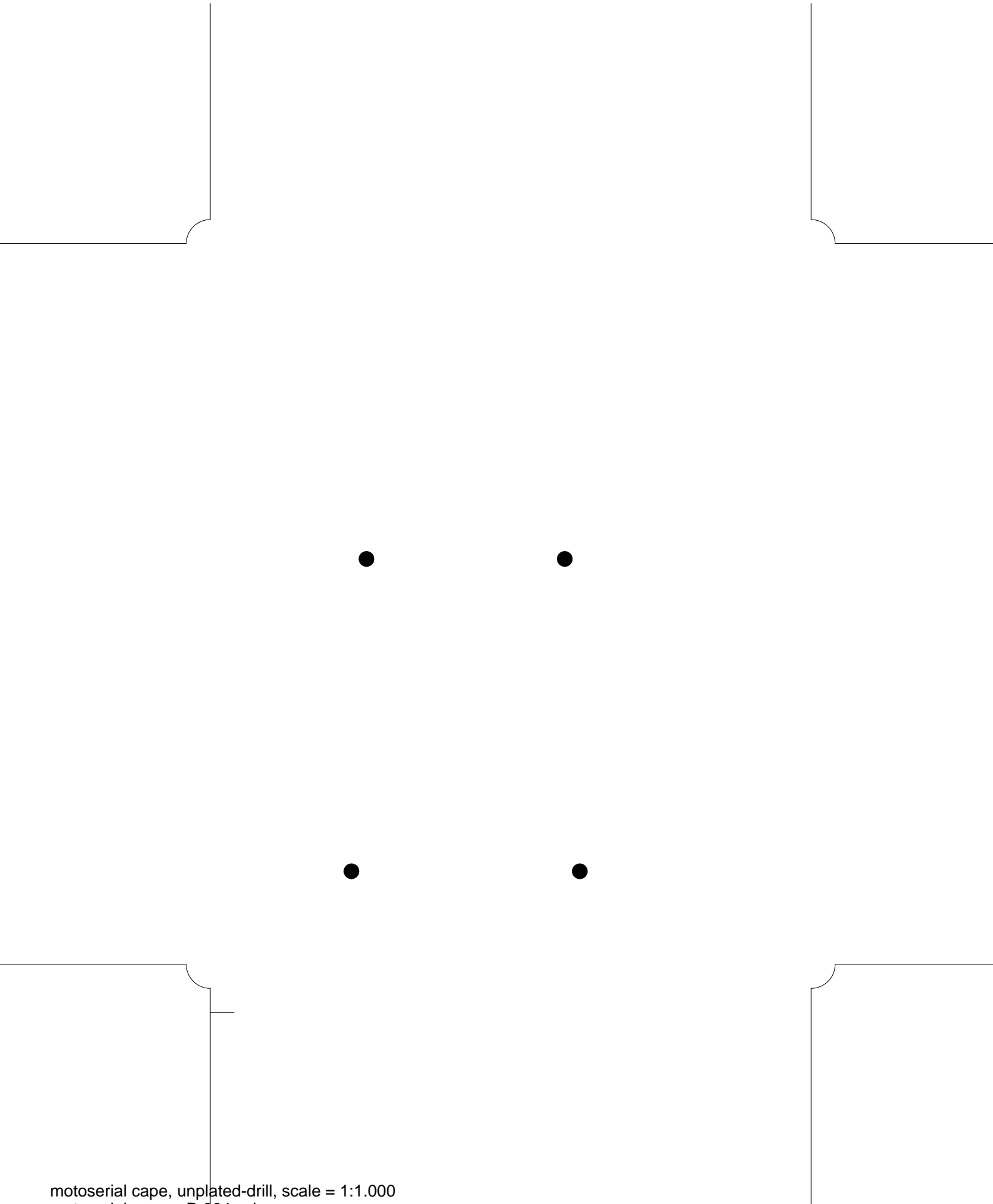
14. fab

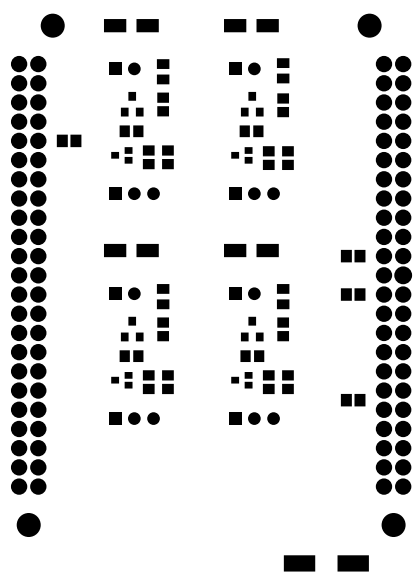


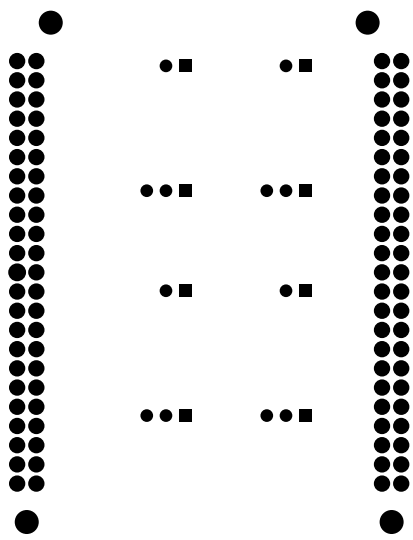




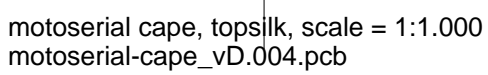


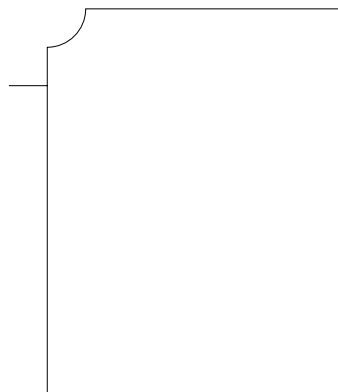
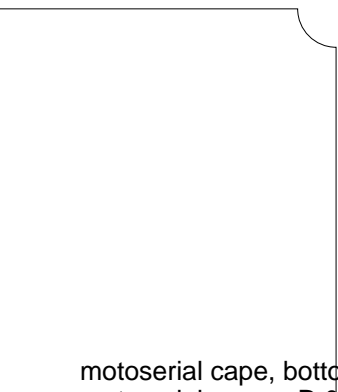
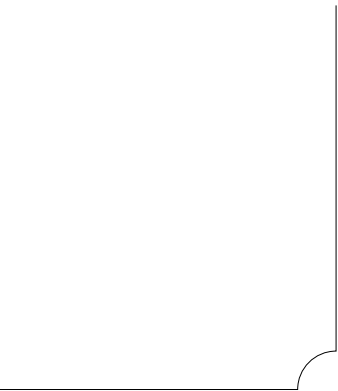


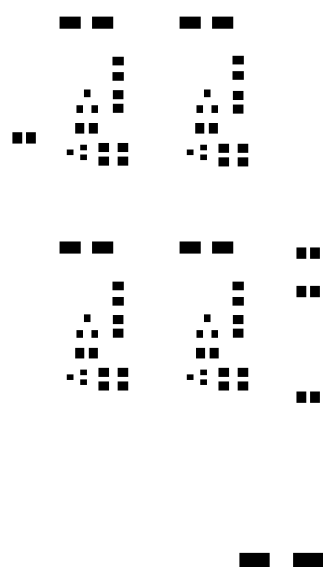


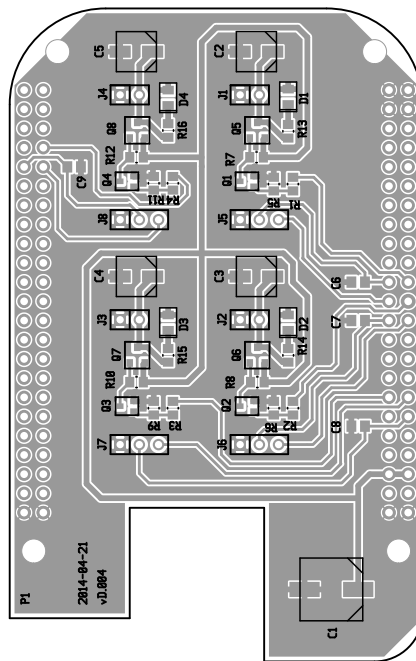


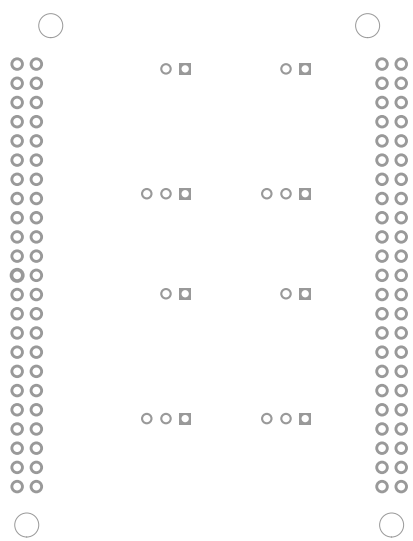






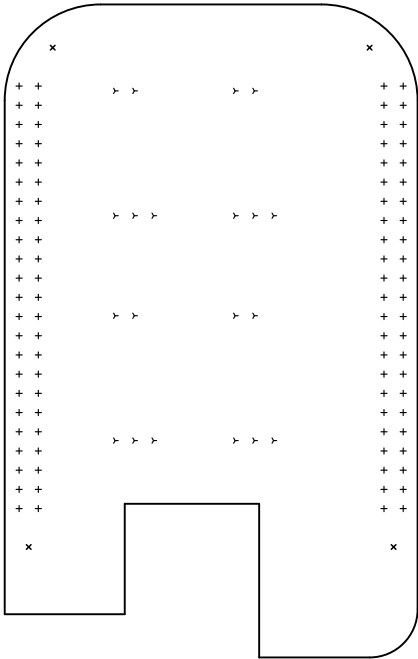






There are 3 different drill sizes used in this layout, 115 holes total

Symbol	Diam. (Inch)	Count	Plated?	
γ	0.038	20	YES	Title: motoserial cape - Fabrication Drawing
+	0.040	92	YES	Author: Kevin Redon
x	0.125	4	NO	Date: Mon Apr 21 2014 21:08:41 GMT UTC



Board outline is the center-line of this path