

1. Table of Contents (This Page)
Created on Mon Sep 16 15:45:04 2013

2. top

3. ground

4. plated-drill

5. unplated-drill

6. componentmask

7. soldermask

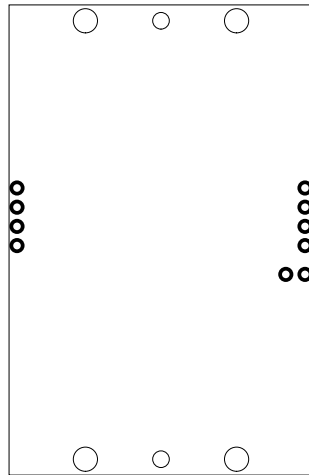
8. topsilk

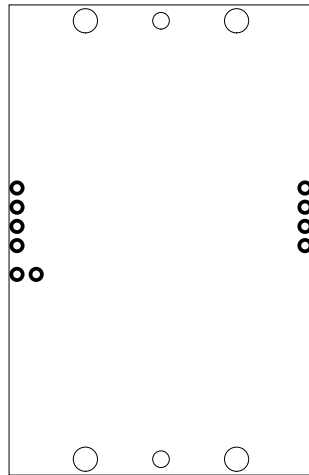
9. bottomsilk

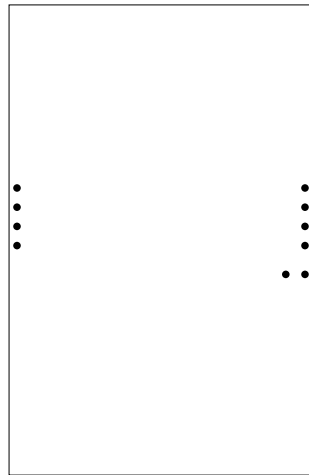
10. topassembly

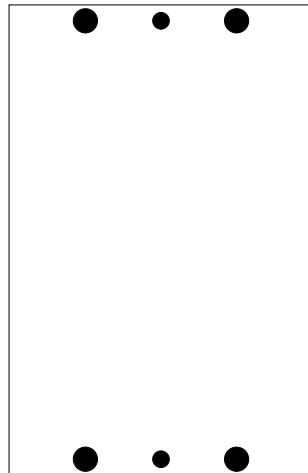
11. bottomassembly

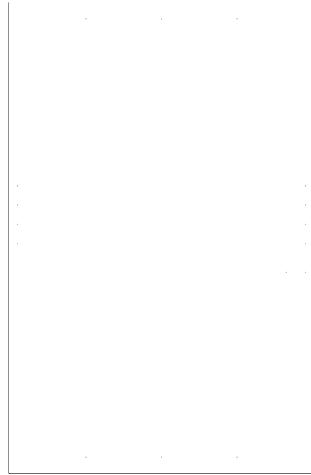
12. fab

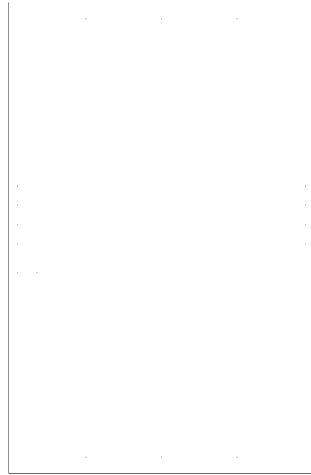




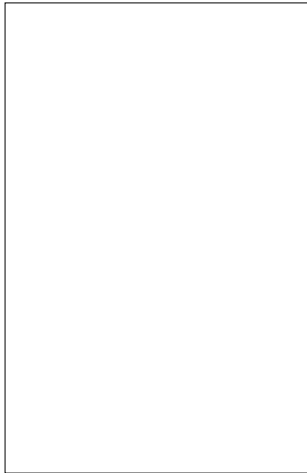


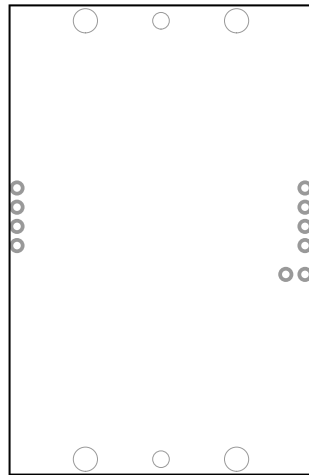


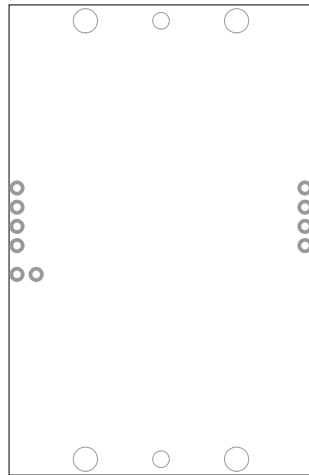






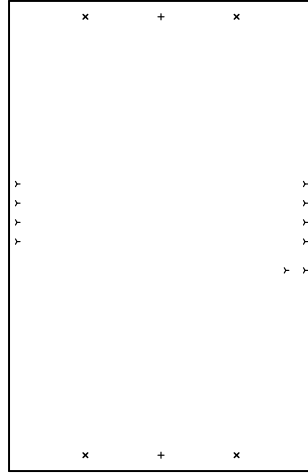






There are 3 different drill sizes used in this layout, 16 holes total

Symbol	Diam. (Inch)	Count	Plotted?	Title: (unknown) - Fabrication Drawing
γ	0.039	10	YES	Author: K [redacted] in Redon
+	0.087	2	NO	Date: Mo 16 Sep 2013 13:45:04 GMT UTC
x	0.126	4	NO	Maximum Dimensions: 2448.818937 mils wide, 1582.677205 mils high



Board outline is the centerline of this 8.000000 mil rectangle - 0,0 to 2448.818937,1582.677205 mils