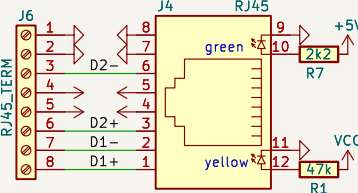


pass through (ok when splitting).
using XLR-3 instead of XLR-5
as intended for amateur installations

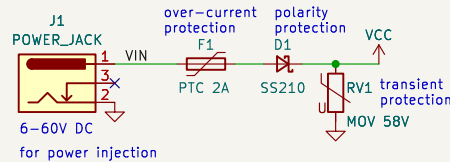


spring terminal
for enclosure mount
(XLR does not fit)

spring terminal
for enclosure mount
(8P8C does not fit)



DMX512 signal pairs + ground
as specified in ANSI E1.11-2008 §7.3,
and passive Power-over-Ethernet using
802.3 10/100 mode B for DC power transport

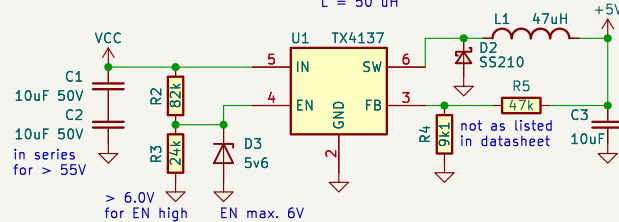


for power injection

$$L = \frac{V_{out} * (V_{in} - V_{out})}{(V_{in} * (I_{max} * 0.3) * f_{sw})}$$

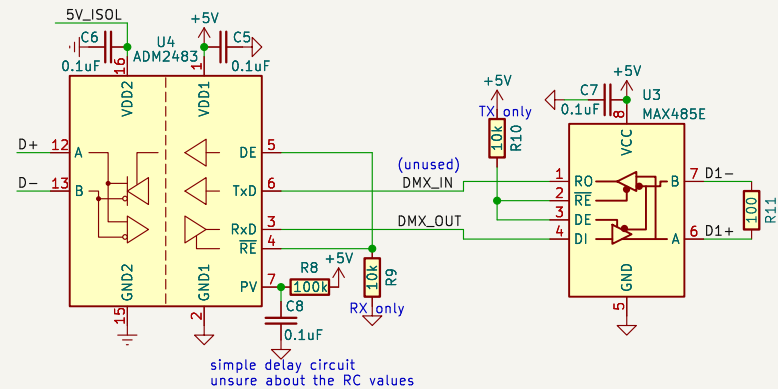
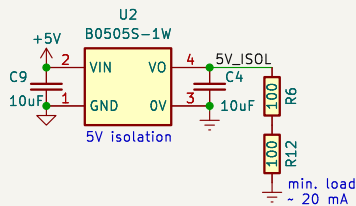
$$L = 5 * (55 - 5) / (55 * (0.3 * 0.3) * 1e6)$$

$$L = 50 \mu H$$

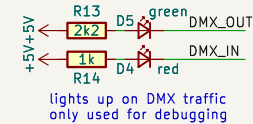


> 6.0V
for EN high

EN max. 6V



simple delay circuit
unsure about the RC values



lights up on DMX traffic
only used for debugging

CERN-OHL-S
King Kévin
CuVoodoo

Sheet: /
File: dm_x_splitter.versioned.kicad_sch

Title: WLED chain - DMX splitter

Size: A4 Date: 2023-12-18

KiCad E.D.A. kicad-cli 7.0.9

Rev: 0.7

Id: 1/1