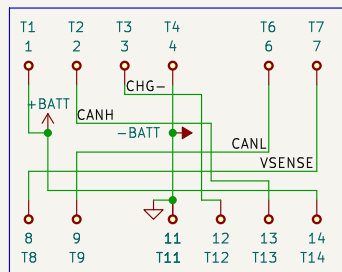


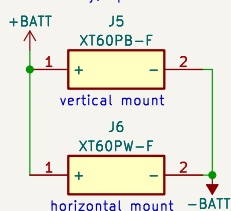
# battery connector



connector is reversible

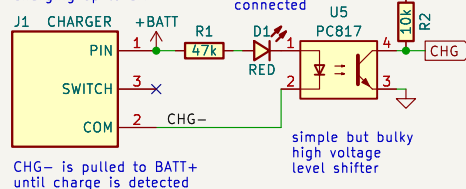
pin 5 and 10 are also internally connected in the battery, but they are not used.

13S battery, up to 54.6V



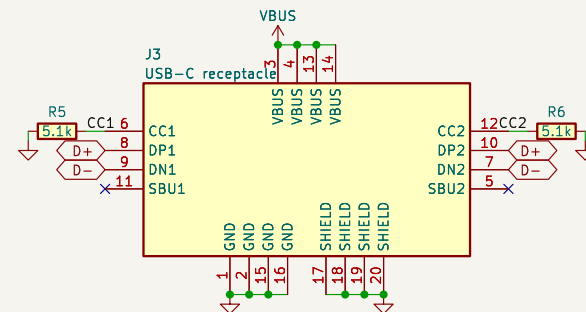
once turned on, you can also charge through the battery port. there is no current feedback protection. thus don't put batteries in parallel without balancing them first.

charging up to 5A



CHG- is pulled to BATT+ until charge is detected

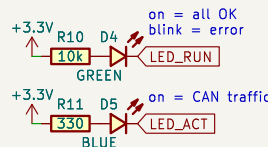
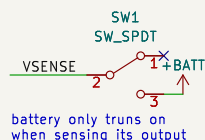
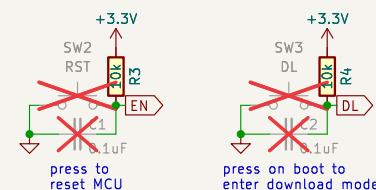
connectors only required to debug/flash



DL low=start bootloader can be set using DTR EN low=assert reset can be set using RTS



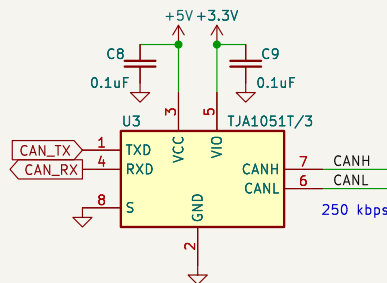
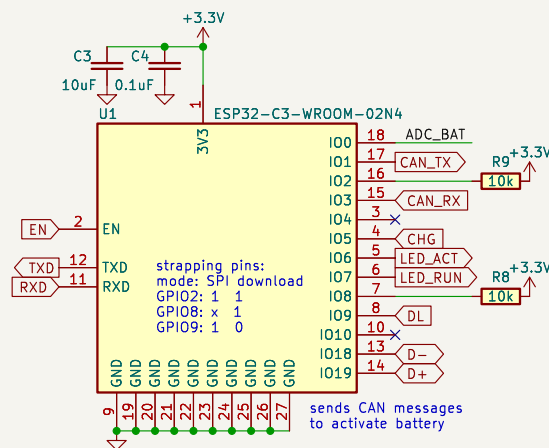
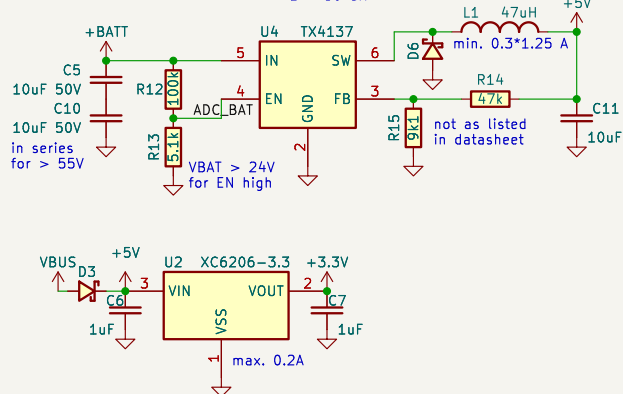
CAN termination resistor adjust value to setup one needed to pull to recessive



$$L = V_{out} * (V_{in} - V_{out}) / (V_{in} * (I_{max} * 0.3) * f_{sw})$$

$$L = 5 * (55 - 5) / (55 * (0.3 * 0.3) * 1e6)$$

$$L = 50 \mu H$$



CERN-OHL-5 connector for RPH0002 battery by King Kevin CuVoodoo used in OKAI ES400B scooter

Sheet: / File: RPH0002\_connector.versioned.kicad\_sch

Title: RPH0002 connector

Size: A4 Date: 2023-08-09

KiCad E.D.A. kicad-cli 7.0.6

Rev: 2.31

Id: 1/1